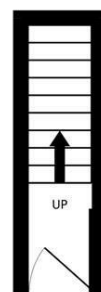
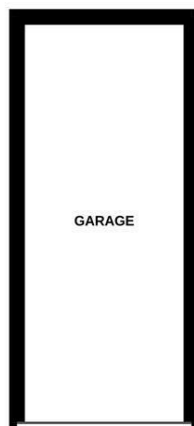


With a garage and no onward chain! This first floor apartment forms part of this sensitive conversion on Tankerville Place, Jesmond. Ideally located in the heart of Brandling Village Conservation Area, Tankerville Place is perfectly placed close to Jesmond Metro Station, the shops, restaurants and cafés of Jesmond as well as Newcastle City Centre itself.

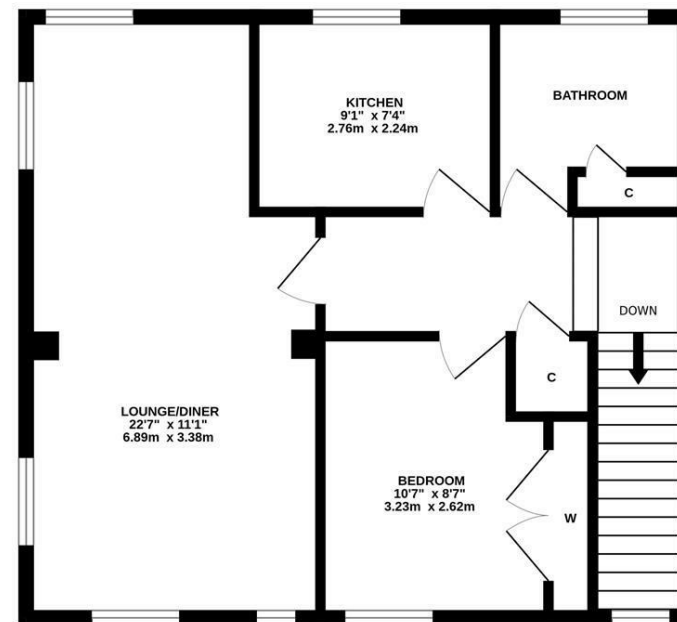
The accommodation briefly comprises: private entrance door to entrance hall with stairs to first floor landing; 22ft lounge diner with dual aspect windows; kitchen with fitted units and work surfaces, bathroom complete with three piece suite; double bedroom with fitted double door wardrobe storage. Externally, a garage providing off-street parking/storage. With no onward chain, early viewings are advised.

One Bedroom Apartment | First Floor | 688 Sq ft (63.9m²) | 22ft Lounge Diner | Kitchen | Bathroom | Garage | Leasehold - 958 Years Remaining | Service Charge £1,782.68 Per Annum | Ground Rent £12 Per Annum | Council Tax Band B | EPC: D

GROUND FLOOR
129 sq.ft. (12.0 sq.m.) approx.



FIRST FLOOR
559 sq.ft. (51.9 sq.m.) approx.



TOTAL FLOOR AREA : 688 sq.ft. (63.9 sq.m.) approx.

Whilst every attempt has been made to ensure the accuracy of the floorplan contained here, measurements of doors, windows, rooms and any other items are approximate and no responsibility is taken for any error, omission or mis-statement. This plan is for illustrative purposes only and should be used as such by any prospective purchaser. The services, systems and appliances shown have not been tested and no guarantee as to their operability or efficiency can be given.
Made with Metropix ©2025

Offers Over £130,000

IMPORTANT NOTE: These particulars and the descriptions and measurements herein do not constitute representation and whilst every effort has been made to ensure accuracy, this cannot be guaranteed.

